

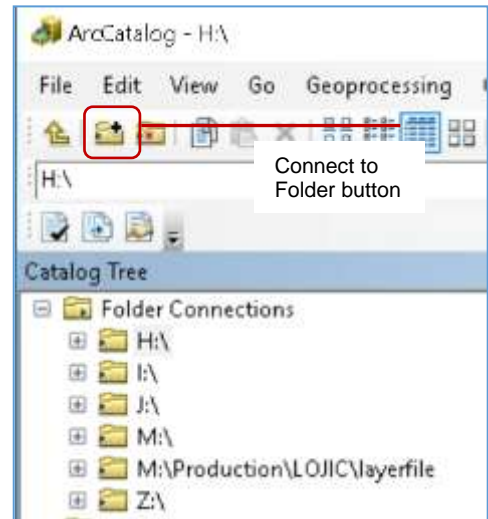
# The LOJIC Virtual Network Directories

In ArcCatalog, all the LOJIC Virtual Network directories can be viewed. **Use the Connect to Folder button to connect to the H:, J:, I:, and M: folders in the My Computer directory.**

Create the MyGISFiles folder on the client's C: drive and use the **Connect to Folder** button in ArcCatalog to connect to it as the Z: drive.

Click [here](#) to see the instructions on setting up the shared folder in the Horizon system.

ArcCatalog connections used most often by users:



Drive	Description
Z:	Drive that is the client's C:\MyGISFiles directory. This is a "bridge" or "pass thru" directory copy data between networks and should be directly accessed from an mxd or project.
H:	Your LOJIC Virtual Network Home Directory. Only the user has access to this drive. This is where users should save their work. Data on this drive is <b>backed up</b> and recoverable.
J:	A shared drive among users. The <b>common</b> directory is shared by all users and is to be used as a <b>temporary</b> place to transfer files between users or groups. <b><i>All contents of the J:\common directory are deleted every Friday night.</i></b> Directories defining groups (i.e., lojic, msd) can be shared by users within that group. Data on this drive is <b>backed up</b> and recoverable.
I:	LOJIC marginal files (logos, notes), raster data (imagery, DEM) and LIDAR data.
M:	An accessible drive containing layer files and map documents.
Database Connections	Connections to the Oracle database.

**Important: Do not save files to the desktop in the virtual environment.**