



Joining PVA data to the Property Layer

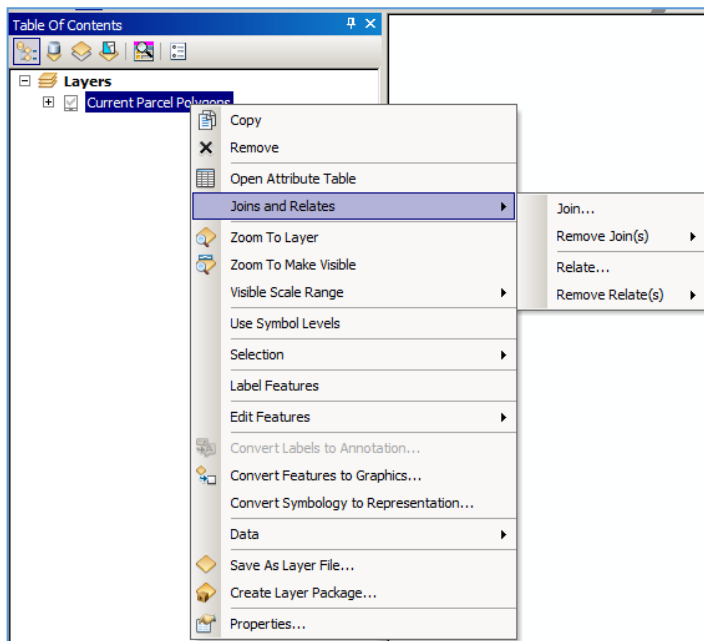
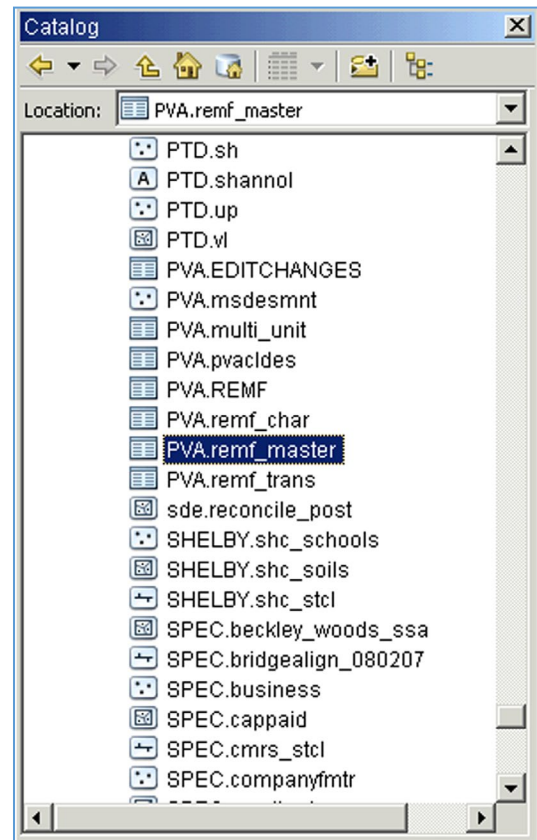
Open **ArcMap** in a Citrix connection and open a **New** mxd.

Add the Current Parcel Polygons layerfile at **M:\Production\lojic\layerfile\PVA**. Click the **Yes** button if the Label Engine Warning window appears.

After the mxd project has opened, click the **ArcCatalog**  button.

Add the Database Connections\Connection to lojicora1.sde**pva.remf_master** to the mxd by dragging it from the ArcCatalog window into the ArcMap Table of Contents. After the table is added to the Table of Contents, it will appear in the **List by Source** list. **Right click** on the table and click **Open** to view the table's attributes. **Right click** on the **Current Parcel Polygons** layer and click on **Open Attribute Table**. Look at the two tables and then close the Table window.

Click the **List by Drawing Order**  button at the top of the Table of Contents and **right click** on the **Current Parcel Polygon** layer. **Select the Joins and Relates** option and then click the **Join** Option.



Joining PVA data to the Property Layer

The **Join Data** window will appear.) In the **“What do you want to join to this layer?”** pulldown, **select “Join attribute from a table”**. Use the pulldown to **select the LRSN field** and the **pva.remf_master** table as shown. In the third field, use the pulldown and **select the LRSN field** even if LRSN is listed in the field.

In **Join Options**, check **Keep only matching records**.

Click OK.

Click the Perform Join Now Without Index button.

When the window closes, **right click** on **Current Parcel Polygons** layer and **Open the Attribute Table**. The **pva.remf_master** attributes are now joined to the **Current Parcel Polygons** table.

Join Data

Join lets you append additional data to this layer's attribute table so you can, for example, symbolize the layer's features using this data.

What do you want to join to this layer?

Join attributes from a table

1. Choose the field in this layer that the join will be based on:
LRSN
2. Choose the table to join to this layer, or load the table from disk:
pva.remf_master
 Show the attribute tables of layers in this list
3. Choose the field in the table to base the join on:
LRSN

Join Options

Keep all records
All records in the target table are shown in the resulting table. Unmatched records will contain null values for all fields being appended into the target table from the join table.

Keep only matching records
If a record in the target table doesn't have a match in the join table, that record is removed from the resulting target table.

Validate Join

[About joining data](#) OK Cancel