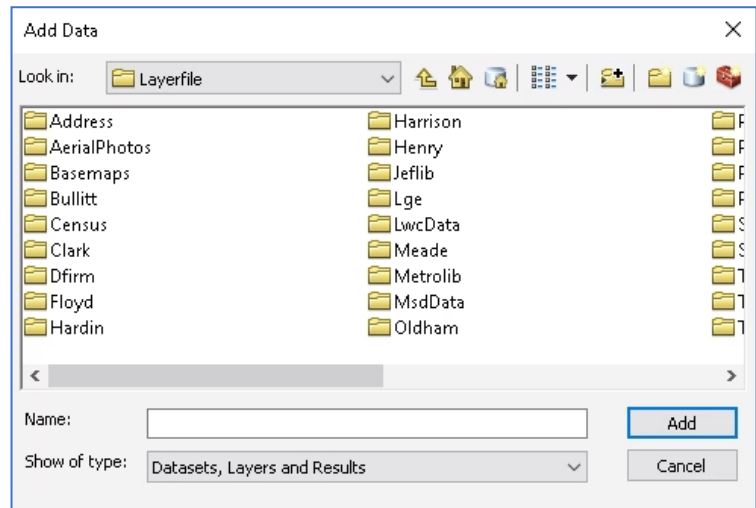


# Accessing LOJIC Data

## Accessing LOJIC Layer files and Group Layer files:

**The recommended way to add data to an ArcGIS 10.X map document is by using layer files.** Layer files are added to a map document just like adding data but the layer properties are set up including symbology, labeling, and scale thresholds. Layer files and Group Layer files are located in the **M:\Production\Layerfile** directory. The layerfile directory structure reflects the current data directory structure.



Once layer files are added to a map document, they are not linked to the original layer file. That means that you can edit the layer in your map document to meet your needs without affecting the original layer file. Conversely, changes to the original layer files will not be reflected in map documents that used the layer files to create layers.

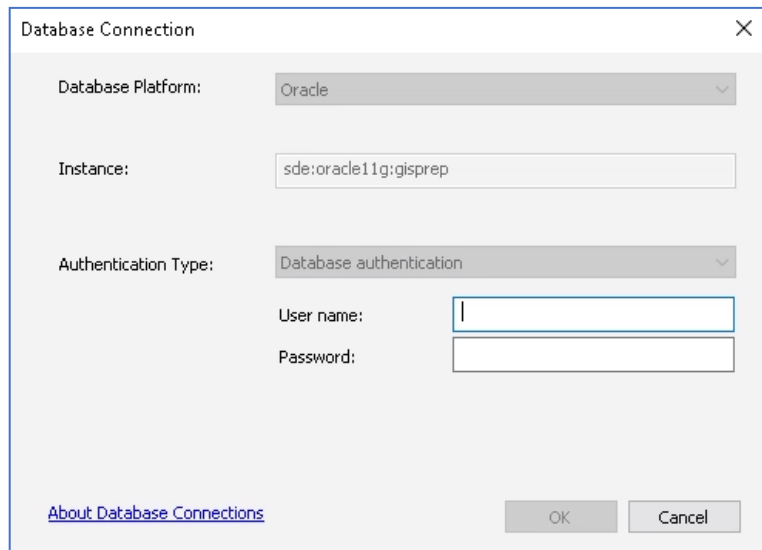
### Accessing LOJIC Layer Files: Example - Adding Major Roads and Street Centerlines

If it is not already set, **Open ArcCatalog** and make a **Connection to Folder M:\Production\Layerfile\** from **This PC**. **Click OK**. **Close ArcCatalog**.

**Open ArcMap. Open a Blank Map document from My Templates.**

In **ArcMap**, **Click** the **ADD DATA** button and navigate to

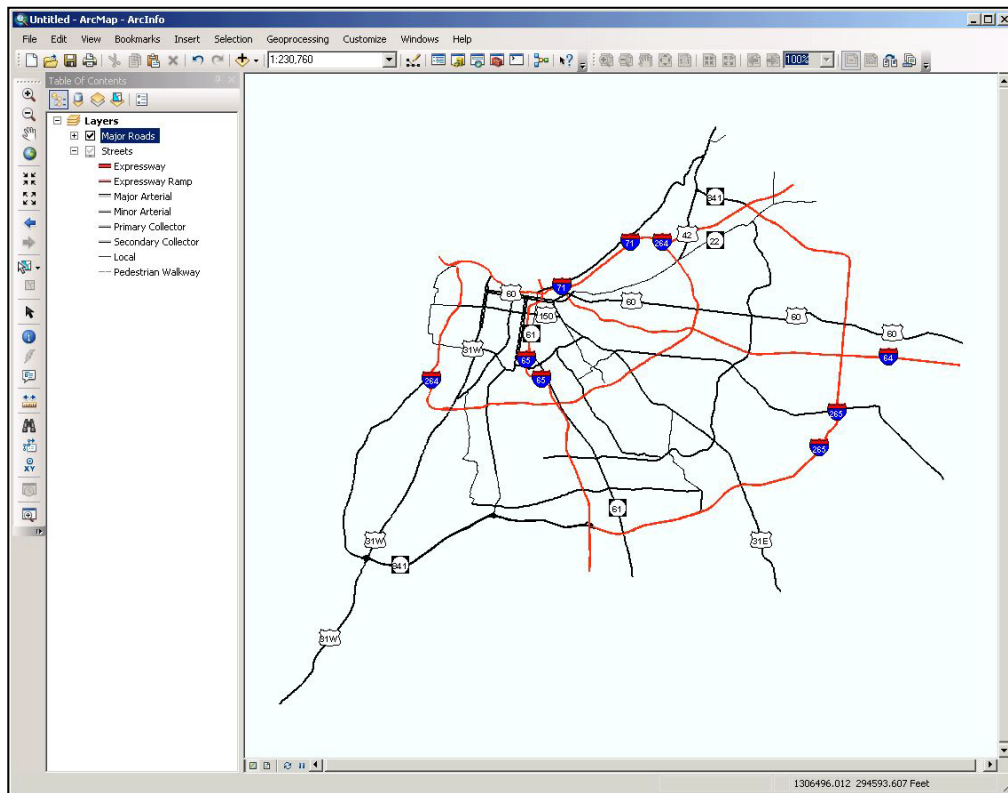
**M:\Production\Layerfile\Jeflib**. **Scroll** over and **select** the **Major Roads.lyr**. **Click ADD**. A Spatial Database Connection login window will appear. Enter your Database username and Database password and click **OK**.



Click the **Add Data** Button and navigate to **M:\Production\Layerfile\Address** and add the **Streets.lyr**

## Accessing LOJIC Data

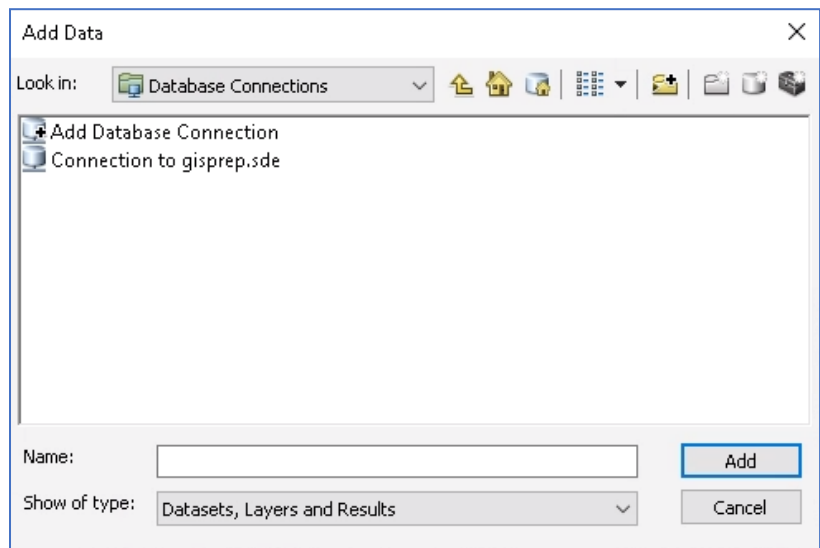
When the layers are added, check both the layers on. It should look like the graphic below in the Data View.



You should see labels on Interstates. **Zoom In** to an area. You will see more street and names appear. If you hover the cursor over a road, the name should appear in a box near the cursor. All of these properties (symbology, map tips display, labeling thresholds) are contained in the layer file.

### Accessing LOJIC Enterprise Database Layers:

If you cannot find a layerfile in the Layerfile directory, you can add the data directly without any layer properties predefined. Please contact Jane Poole ([gis@lojic.org](mailto:gis@lojic.org)) to have layer files made for published data. **Click** the **ADD DATA** button in ArcMap. From the Add Data window, navigate to **Database Connections** and **double click** on the connection to a database. Example: Connection to gisprep.sde

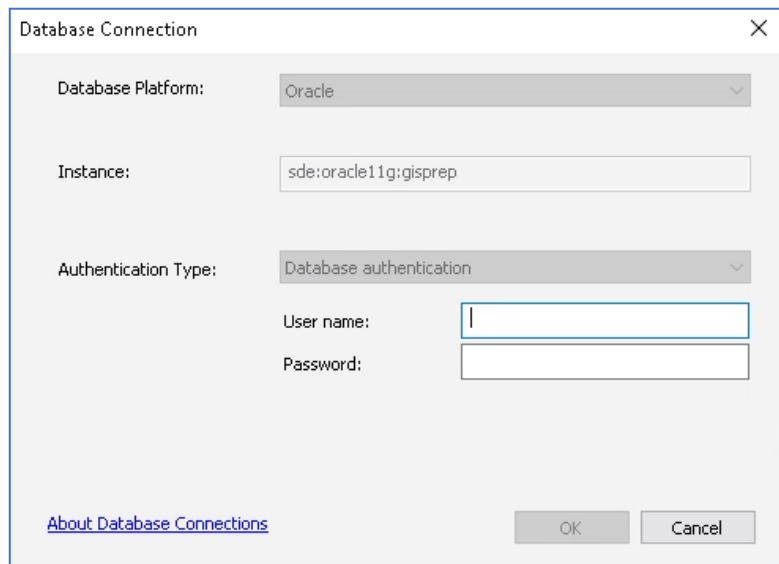


## Accessing LOJIC Data

A Database Connection login window will appear. Make sure the Instance contain **gisprep**. Enter your Database user name and password

Click **OK**.

Once connected to the LOJIC Enterprise Database, you will see a list of all the point, line and polygon layers. You can then double-click on any layer to add it to your ArcMap view. In this exercise, **scroll** over and **select JEFLIB.COUNCIL** to add the Metro Council District layer. Click **ADD**.



Database Connection

Database Platform: Oracle

Instance: sde:oracle11g:gisprep

Authentication Type: Database authentication

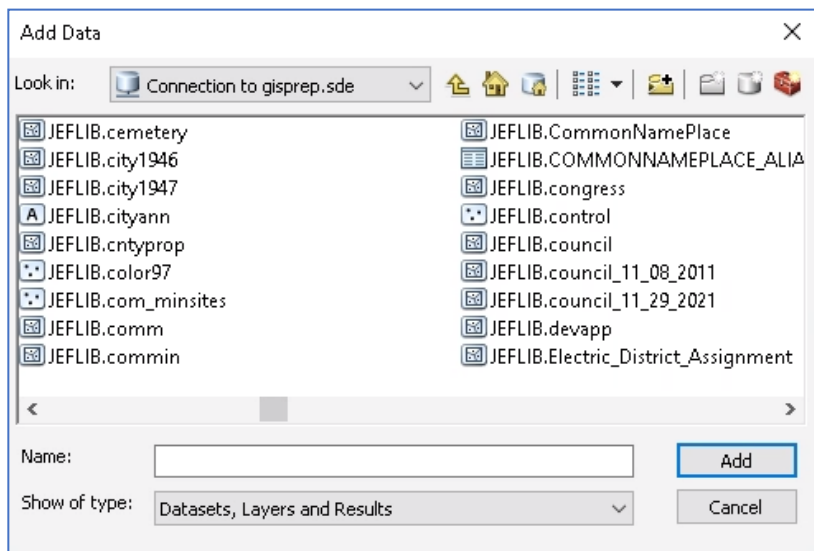
User name:

Password:

[About Database Connections](#)

**NOTE ON ORACLE NAMING CONVENTION:** The naming convention for Enterprise database feature classes is: <DIRECTORY NAME>.<FEATURE CLASS>. Example: JEFLIB.council

**Right click** on the layer name and select **Properties** to edit symbology, add labeling, change the layer name or do whatever your needs require.



Add Data

Look in: Connection to gisprep.sde

JEFLIB.cemetery  
JEFLIB.city1946  
JEFLIB.city1947  
A JEFLIB.cityyann  
JEFLIB.cntyprop  
JEFLIB.color97  
JEFLIB.com\_minsites  
JEFLIB.comm  
JEFLIB.commin  
JEFLIB.CommonNamePlace  
JEFLIB.COMMONNAMEPLACE\_ALIA  
JEFLIB.congress  
JEFLIB.control  
JEFLIB.council  
JEFLIB.council\_11\_08\_2011  
JEFLIB.council\_11\_29\_2021  
JEFLIB.devapp  
JEFLIB.Electric\_District\_Assignment

Name:

Show of type: Datasets, Layers and Results