

Migration to the new LOJIC I drive from the L drive

The LOJIC L drive houses many data layers and marginal elements including aerial photography, shaded relief, locators, logos and notes. Due to the smaller resolution of the 2016 aerial photography which increased its file size, we needed to move the L drive files to a much larger drive called the I (Isilon) drive. As a result, all LOJIC Citrix user will need to start redirecting L drive files used in mxds to their I drive equivalents. The I drive has a new directory structure and many files have been renamed to make them more understandable.

1. Make a folder connection to the I drive.
2. Familiarize yourself with the new directory structure. See attached I: (Isilon) Mapping document. Click [here](#) to view from web site.

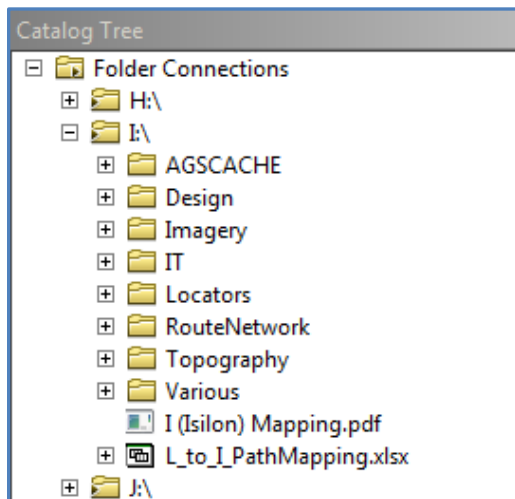


Figure 2 - I drive directory structure

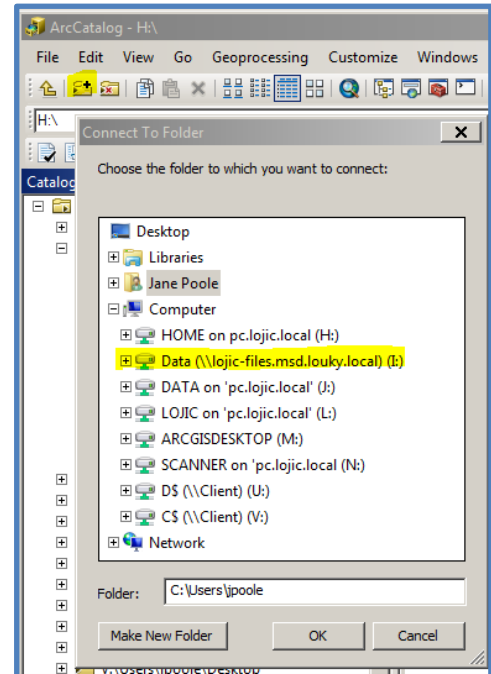


Figure 1 - Make a folder connection to I drive

3. Replace aerial photo, shaded relief, 1994 FIRM layers and the Urban Tree Canopy Land Cover and Environmental Priority Grid layers within mxds with new layerfiles by either using the Add Layers tool or going to M:\Production\lojic\layerfile\AERIALPHOTOS, M:\Production\lojic\layerfile\TERRAIN, M:\Production\lojic\layerfile\FIRM or M:\Production\lojic\layerfile\URBAN TREE CANOPY.
4. Click [here](#) to view the excel spreadsheet called **L_to_I_PathMapping** as a guide to replace logos. For example the LOJIC Logo at L:\lojicmap\lojic.tif is now at I:\Design\Logos\LOJIC_Blocks_Red_Horizontal_935X338_BlackText.png.
5. When adding map notes into new mxds, go to the I:\Design\Logos\TextElements directory. (Example: L:\lojicmap\briefcpr.txt is now I:\Design\Logos\TextElements\ LOJIC_CopyrightBrief.txt.)
6. Locators are now at I:\Locators. The locator files have the same names.
7. The Digital Raster Graphics (DRG) of the 7.5 minute USGS Quads are now available via a layerfile at M:\Production\lojic\layerfile\WEBSERVICES\U.S.G.S. 7.5 Minute Quads.lyr using a web service.