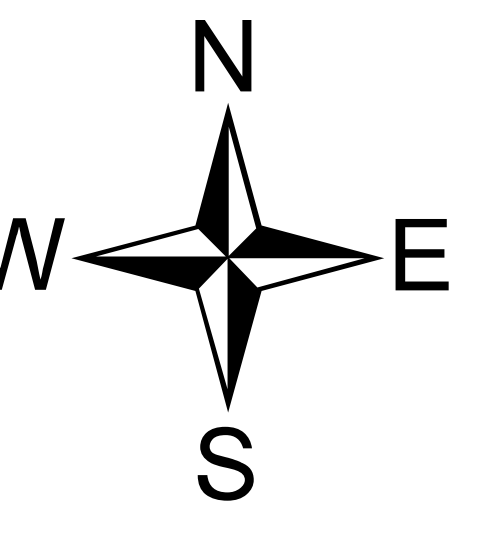


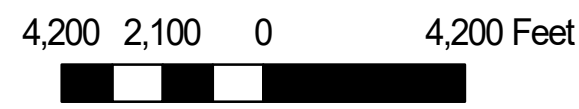
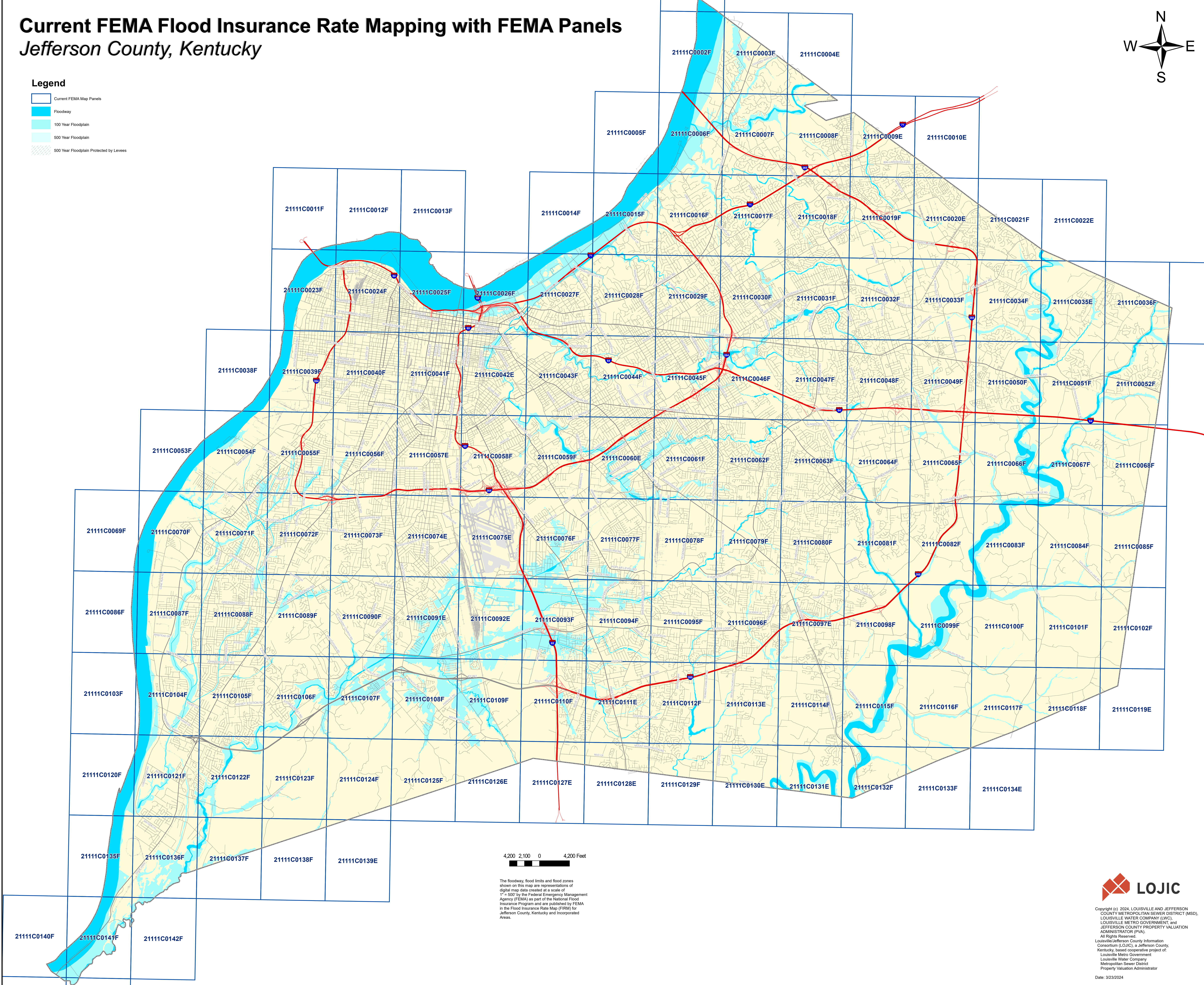
# Current FEMA Flood Insurance Rate Mapping with FEMA Panels

## Jefferson County, Kentucky



### Legend

- Current FEMA Map Panels
- Floodway
- 100 Year Floodplain
- 500 Year Floodplain
- 500 Year Floodplain Protected by Levees



The floodway, flood limits and flood zones shown on this map are representations of digital map data created at a scale of 1" = 500' by the Federal Emergency Management Agency (FEMA) as part of the National Flood Insurance Program and are published by FEMA in the Flood Insurance Rate Map (FIRM) for Jefferson County, Kentucky and incorporated Areas.