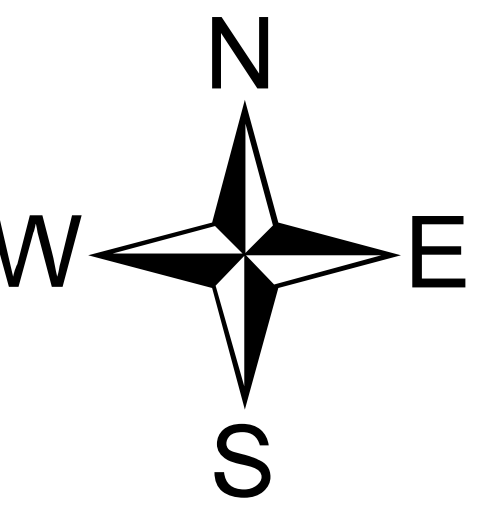






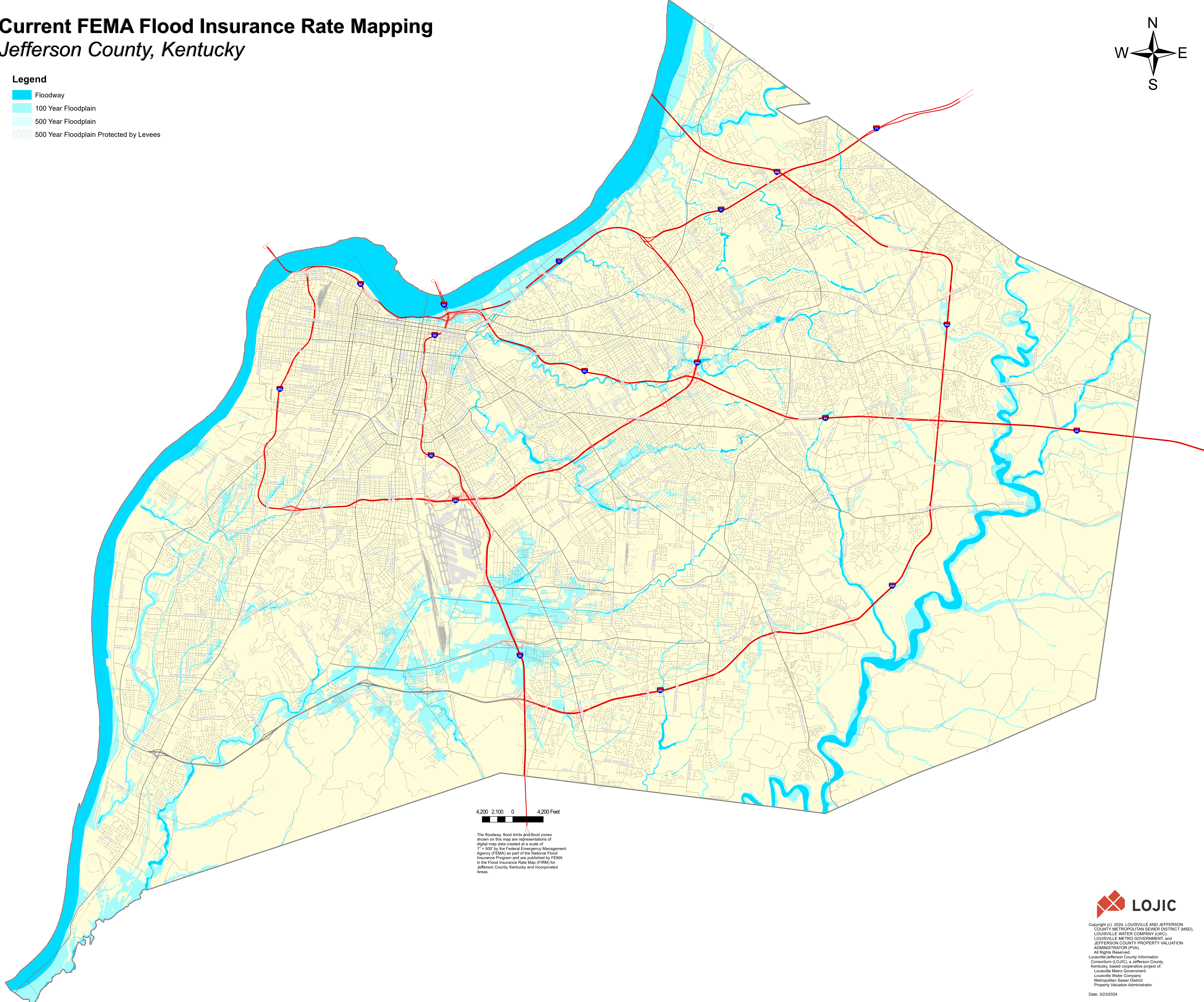
Current FEMA Flood Insurance Rate Mapping

Jefferson County, Kentucky



Legend

-  Floodway
-  100 Year Floodplain
-  500 Year Floodplain
-  500 Year Floodplain Protected by Levees



4,200 2,100 0 4,200 Feet

The roadway, flood limits and flood zones shown on this map are representations of digital map data created at a scale of 1" = 500' by the Federal Emergency Management Agency (FEMA) as part of the National Flood Insurance Program and are published by FEMA in the Flood Insurance Rate Map (FIRM) for Jefferson County, Kentucky and Incorporated Areas.



Copyright (c) 2024, LOUISVILLE AND JEFFERSON COUNTY METROPOLITAN SEWER DISTRICT (MSD), LOUISVILLE WATER COMPANY (LWC), LOUISVILLE METRO GOVERNMENT, and JEFFERSON COUNTY PROPERTY VALUATION ADMINISTRATOR (PVA). All Rights Reserved. Louisville/Jefferson County Information Consortium (LOJIC), a Jefferson County, Kentucky, based cooperative project of Louisville Metro Government, Louisville Water Company, Metropolitan Sewer District Property Valuation Administrator

Date: 3/23/2024