

Managing and Accessing Your Personal Data:

To add your personal data or to fix a broken link to personal data in an ArcView 9.X map document on Citrix, you must make your data accessible in the Citrix environment. Your goal should be to have all your data and map documents on your Citrix **Home drive** or **H: drive**. The H: drive is backed up daily. You should only use your V: drive (client C: drive) as a bridge or link to copy data between your local network and the LOJIC Citrix network.



Moving Your Data to the Citrix Environment

Create a directory in your local C:\Documents and Settings\mygisfiles. Copy your PC environment data into it. Feel free to create any kind of subdirectory structure in the directory. Delete shapefiles that are out of date or no longer needed. When you have your data in the the C:\Documents and Settings\

Example: The Wafflehouse map document and data

If it is not yet created, **Open** Windows Explorer and **create** a directory in your C:\Documents and Settings\mygisfiles. Copy the **CitrixTraining** directory on the **MSD network** at **W:\DATA\MSD** to the **C:\ C:\Documents and Settings\ directory.**

Open ArcMap-ArcView in a Citrix connection. Start using ArcMap with a **new empty map**.

Click on the **ArcCatalog**  button to open an ArcCatalog window. Make a connection to the **V:\Documents and Settings\ and the **H:** drive using the **Connection to Folder**  button.**

Copy the **V:\Documents and Settings\ to the **H:\ drive**. **Exit** ArcCatalog.**

In **ArcMap-ArcView**, go to **File** Menu, **Open** option and navigate to **H:\CitrixTraining\exercises\lesson 3\wafflehouse.mxd**. **Log into** the SDE Database when the Spatial Database Connection window appears. Remember, only complete the User Name and Password form fields. Keep the Database form field **blank**.

When the wafflehouse map document data view opens, you will see that the link to the data source for the wafflehouse locations is broken (!). The source data has moved from its original location

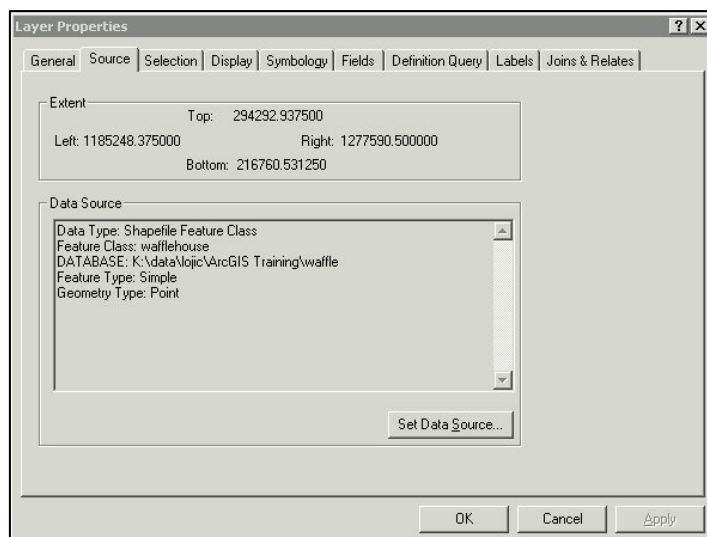


Figure 1 – Source Layer Properties window for Wafflehouse layer.

which is saved in the map document. A new link to the data source must be re-established. Setting a new data source to a layer will probably need to be done in many of your converted projects.

Right click on the wafflehouse layer and select the **Properties** option. Click on the **Source** tab. In the Layer Properties window, (Figure 1) information about a layer can be viewed. The DATABASE pathname to the wafflehouse shapefile is no longer valid. It is a pathname on the client's PC network which is no longer accessible in the Citrix environment. A new pathname needs to be established to the location of the data in the Citrix environment. **Click the SET DATA SOURCE...** button.

In the Data Source window, (Figure 2) navigate to **H:\CitrixTraining\exercises\Lesson 3** and select **wafflehouse.shp**. Click **ADD**. Click **APPLY** in the Layer Properties window. (Figure 2) The data source information is now updated to the correct pathname. Click **OK**.

Save the map document as **H:\CitrixTraining\exercises\lesson3.mxd** and **exit** the ArcMap-ArcView. **Log out** of Citrix and **close** Internet Explorer.

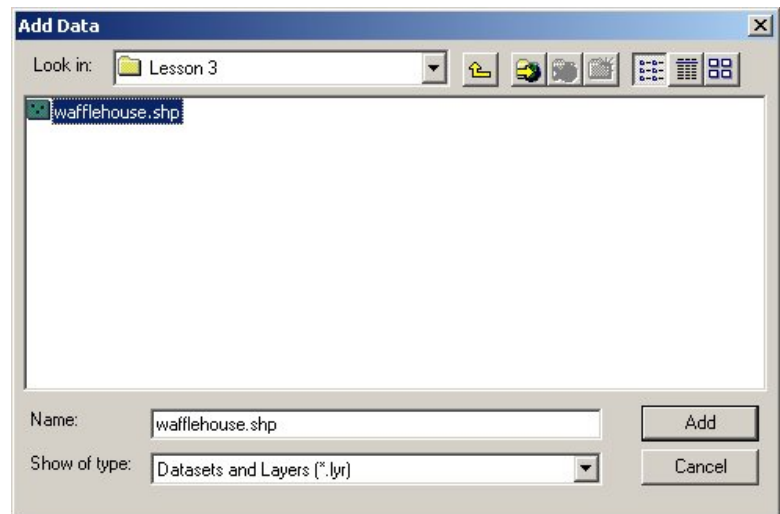


Figure 2 – Data Source window.