

Joining PVA data to the Property Layer

Open **ArcMap-ArcView** in a Citrix connection. Click on **Browse for maps...** and navigate to **M:\prod\lojic\arcview** and click on **beginner.mxd**.

Log into the SDE Database when the Spatial Database Connection window appears. Remember, only complete the User Name and Password form fields. Keep the Database form field **blank**.

In the **File** Menu, **Save As**
H:\CitrixTraining\exercises\joining.mxd.

Add the Database Connections\Connection to lojicora1.sde\PROPERTY.REMF_MASTER to the joining.mxd. (Figure 1) After the table is added to the Table of Contents, it will appear in the **Source** list.

Click the **Display** tab, **expand** the **CURRENT PARCEL INFORMATION** group layer and **right click** on the **Current Parcel Polygon** layer. **Select** the **Joins and Relates** option and then click the **Join** Option. (Figure 2)

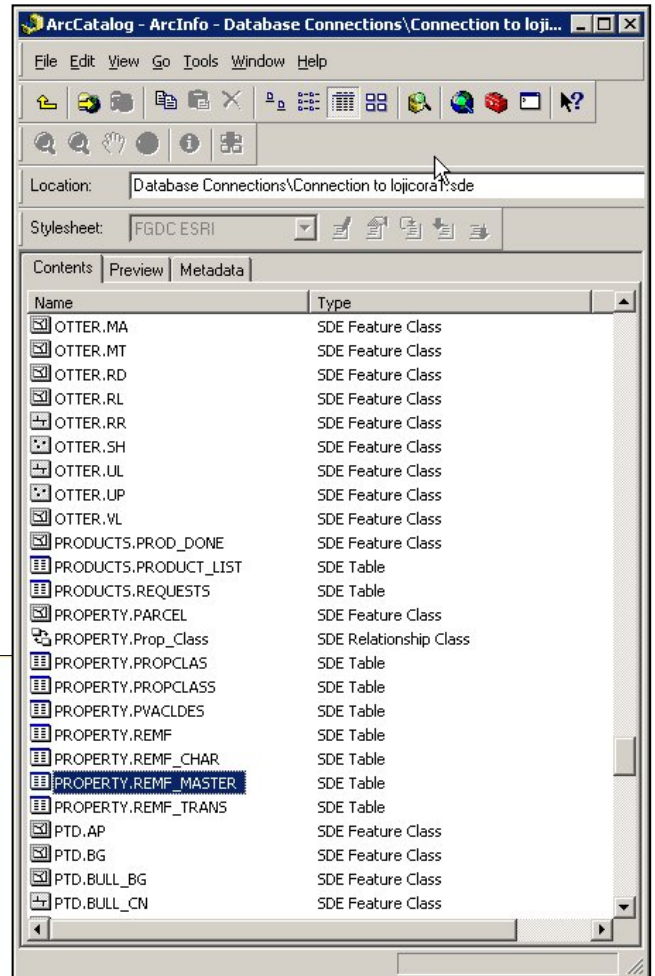


Figure 1 – Adding the remf_master table.

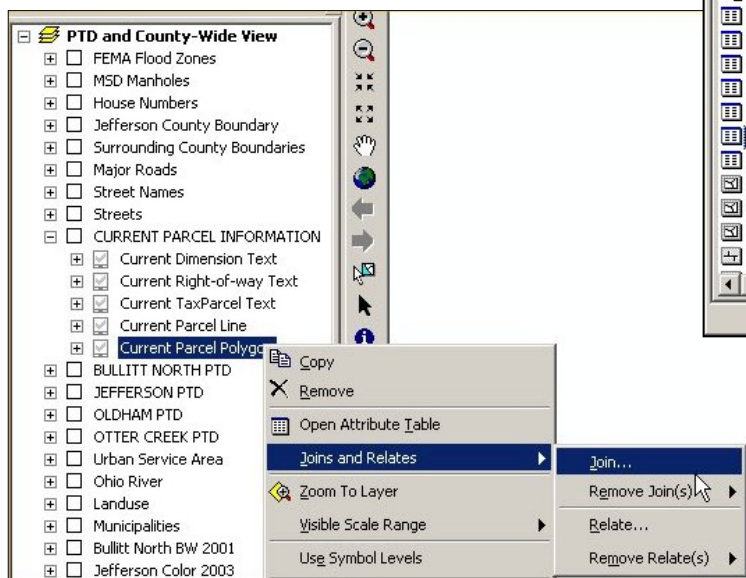


Figure 2 – Selecting the Join option.

The Join Data window will appear. (Figure 3) In the “**What do you want to join to this layer?**” pulldown, select “**Join attribute from a table**”. Use the pulldown to select the **LRSN** field and the **remf_master** table as shown in Figure 3. **Click OK**.

The items in PROPERTY.REMF_MASTER will be appended to the Current Parcel Polygon table and can be viewed by **right clicking** on Current Parcel Polygon layers and **selecting the Open Attribute Table** option. Look at the appended items. **Close** the attribute table.

Save the map document.

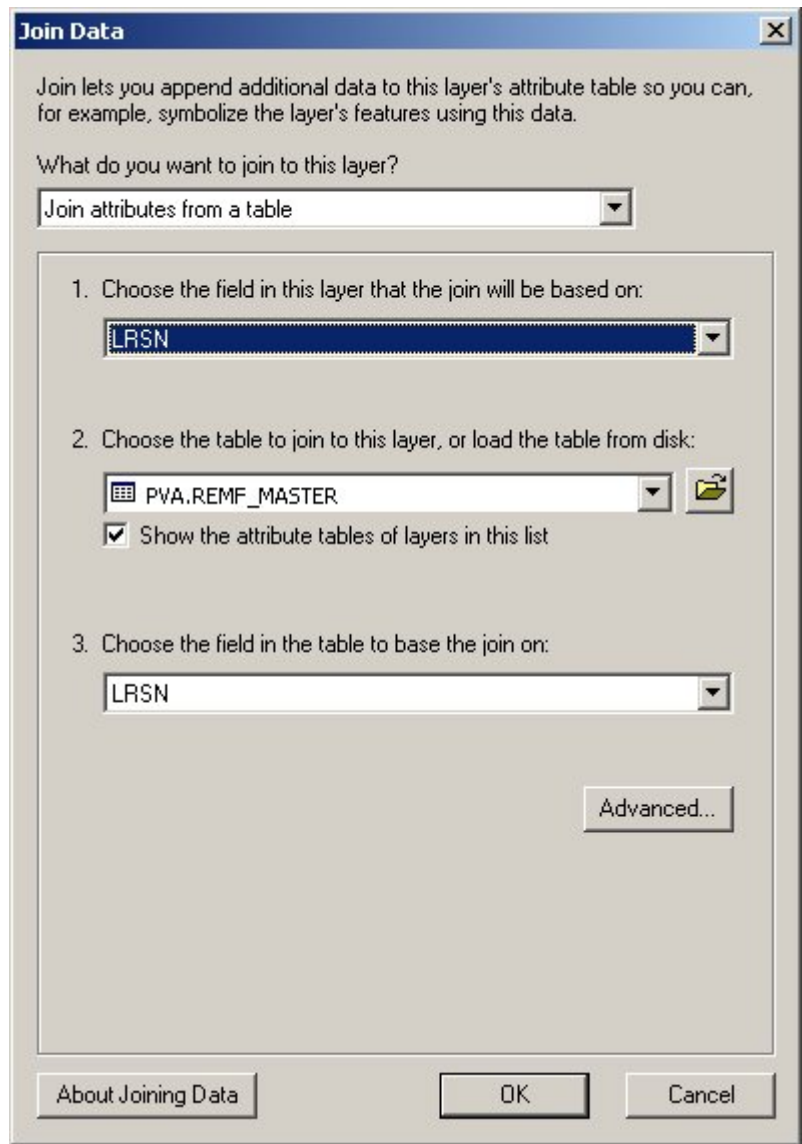


Figure 3 – Join Data window.