

The Citrix Directories

In ArcCatalog, all the Citrix directories can be viewed. (Figure 1)

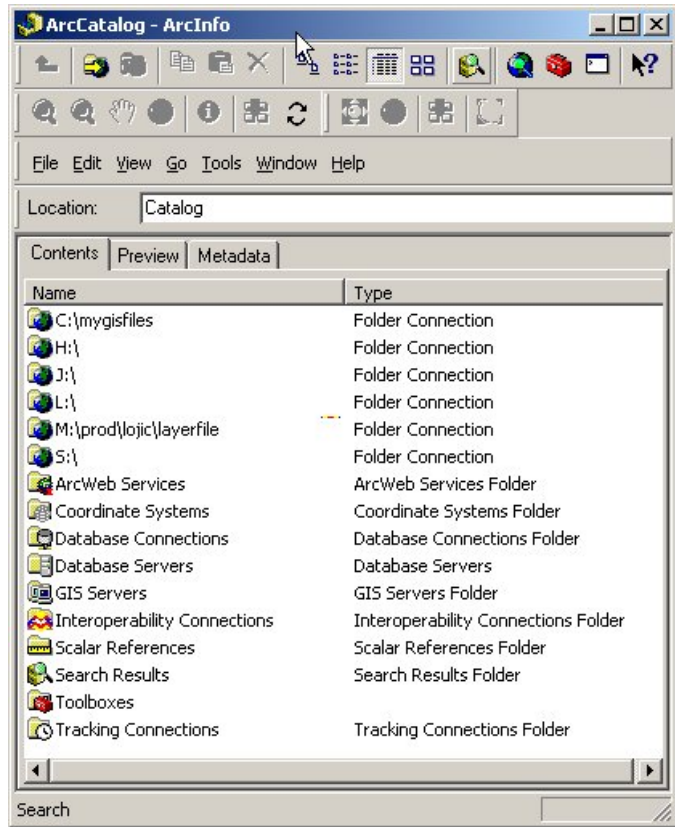


Figure 1 – The Citrix directories

ArcCatalog connections used most often by Citrix users:

Drive	Description
C:\mygisfiles	Folder on the client's PC C:drive. Mapping to the entire C: drive will slow down the connection. Map to a directory in the C:drive.
H:	Citrix Home Directory. The Citrix user only has access to this drive
J:	A shared drive among Citrix users. The common directory is shared by all Citrix users and is to be used as a temporary place to transfer files between users or groups. Directories defining groups (i.e., lojic, msd) can be shared by Citrix users within that group.
L:	LOJIC data directory.
M:	An accessible drive containing layer files and map documents.
Database Connections	Connections to the SDE Oracle database.