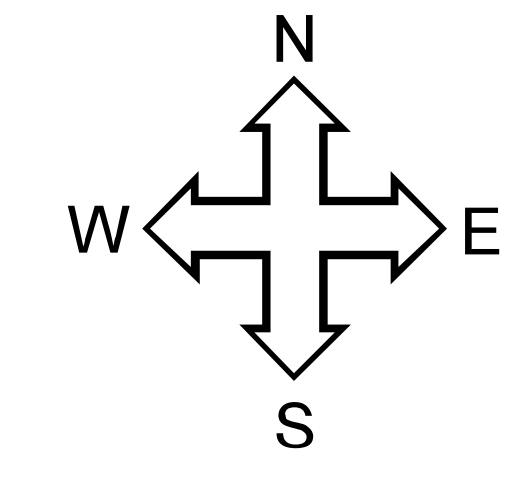
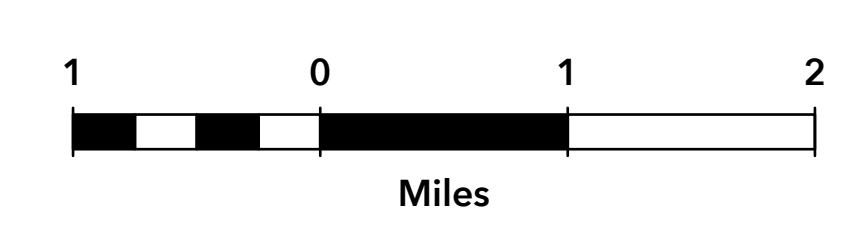
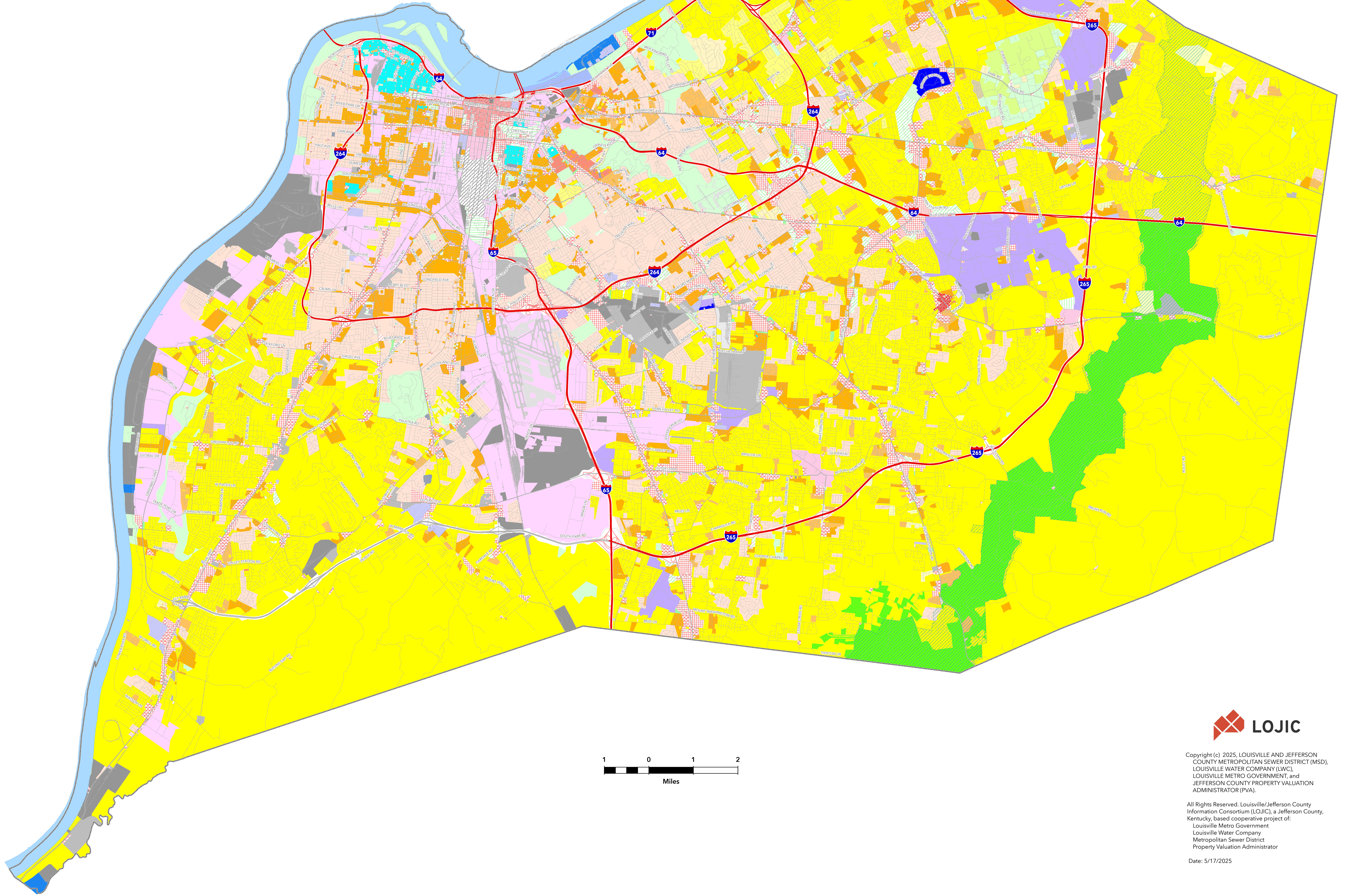


Zoning

Jefferson County, Kentucky



- | | | | |
|-----------------------------------|------------------------------------|--|---|
| Overlay Districts | CR; (CR) Commercial Residential | PD Planned Development | R5A; (R5A) Residential Multi-Family |
| Bardstown Road | CTC1 Commerical Town Center | PEC Planned Employment Center | R5B Residential Two-Family |
| NULU | CTC2 Commerical Town Center | PRO Planned Research/Office | R6 Residential Multi-Family |
| Downtown | EZ1; (EZ1) Enterprise Zone | (PRD); PRD Planned Residential Development | R7 Residential Multi-Family |
| Floyds Fork | M1 Industrial | PVD Planned Village Development | R8A Residential Multi-Family |
| Waterfront Review | M2; (M2) Industrial | (RR); RR Rural Residential | R8A Residential Multi-Family |
| | M3; (M3) Industrial | R1; (R1) Residential Single Family | RE Residential Estate |
| Detailed Zoning | OR Office/Residential | R2 Residential Single Family | ROW Right of Way |
| C1; (C1) Commercial | OR1; (OR1) Office/Residential | R2A Residential Single Family | TNZZ Traditional Neighborhood Zoning District |
| C2; (C2) Commercial | OR2 Office/Residential | R3 Residential Single Family | UN Urban Neighborhood |
| C3; (C3) Commercial | OR3; (OR3) Office/Residential | R4; (R4) Residential Single Family | (W1) Waterfront |
| CM; (CM) Commercial Manufacturing | OTF; (OTF) Office/Tourist Facility | R5; (R5) Residential Single Family | (W2) Waterfront |
| CN Neighborhood Commercial | | | (W3; (W3) Waterfront |



Copyright (c) 2025, LOUISVILLE AND JEFFERSON COUNTY METROPOLITAN SEWER DISTRICT (MSD), LOUISVILLE WATER COMPANY (LWC), LOUISVILLE METRO GOVERNMENT, and JEFFERSON COUNTY PROPERTY VALUATION ADMINISTRATOR (PVA).

All Rights Reserved. Louisville/Jefferson County Information Consortium (LOJIC), a Jefferson County, Kentucky, based cooperative project of: Louisville Metro Government, Louisville Water Company, Metropolitan Sewer District, Property Valuation Administrator

Date: 5/17/2025