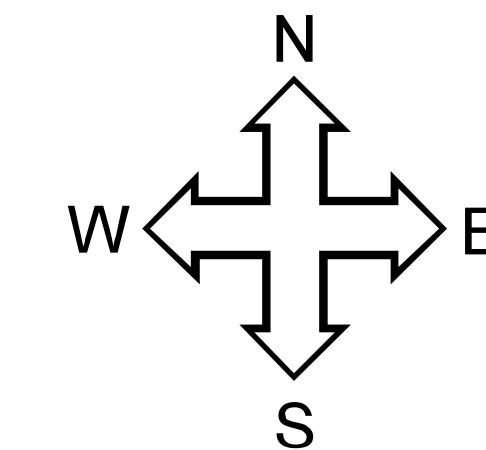
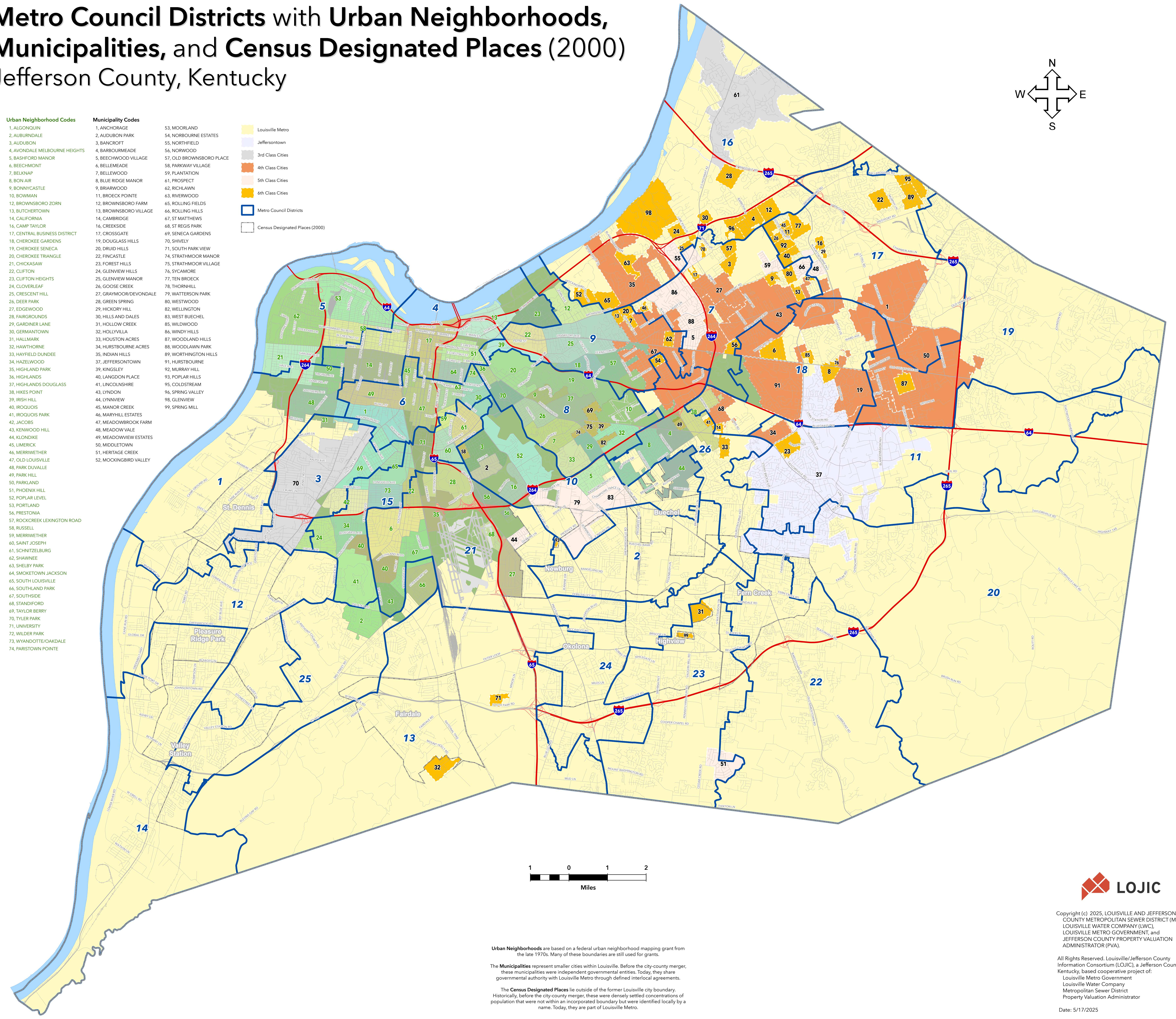


# Metro Council Districts with Urban Neighborhoods, Municipalities, and Census Designated Places (2000) Jefferson County, Kentucky



- |   |  |
|---|--|
| <p><b>Urban Neighborhood Codes</b></p> <ol style="list-style-type: none"> <li>1, ALGONQUIN</li> <li>2, AUBURNDALE</li> <li>3, AUDUBON</li> <li>4, AVONDALE MELBOURNE HEIGHTS</li> <li>5, BASHFORD MANOR</li> <li>6, BEECHMONT</li> <li>7, BELKNAP</li> <li>8, BON AIR</li> <li>9, BONNYCASTLE</li> <li>10, BOWMAN</li> <li>12, BROWNSBORO ZORN</li> <li>13, BUTCHERTOWN</li> <li>14, CALIFORNIA</li> <li>16, CAMP TAYLOR</li> <li>17, CENTRAL BUSINESS DISTRICT</li> <li>18, CHEROKEE GARDENS</li> <li>19, CHEROKEE SENECA</li> <li>20, CHEROKEE TRIANGLE</li> <li>21, CHICKASAW</li> <li>22, CLIFTON</li> <li>23, CLIFTON HEIGHTS</li> <li>24, CLOVERLEAF</li> <li>25, CRESCENT HILL</li> <li>26, DEER PARK</li> <li>27, EDGEWOOD</li> <li>28, FARGROUNDS</li> <li>29, GARDNER LANE</li> <li>30, GERMAINTOWN</li> <li>31, HALLMARK</li> <li>32, HAWTHORNE</li> <li>33, HAYFIELD DUNDEE</li> <li>34, HAZELWOOD</li> <li>35, HIGHLAND PARK</li> <li>36, HIGHLANDS</li> <li>37, HIGHLANDS DOUGLASS</li> <li>38, HIKES POINT</li> <li>39, IRISH HILL</li> <li>40, IROQUOIS</li> <li>41, IROQUOIS PARK</li> <li>42, JACOBS</li> <li>43, KENWOOD HILL</li> <li>44, KLONDIKE</li> <li>45, LIMERICK</li> <li>46, MERRIWETHER</li> <li>47, OLD LOUISVILLE</li> <li>48, PARK DUVALLE</li> <li>49, PARK HILL</li> <li>50, PARKLAND</li> <li>51, PHOENIX HILL</li> <li>52, POPLAR LEVEL</li> <li>53, PORTLAND</li> <li>56, PRESTONIA</li> <li>57, ROCKCREEK LEXINGTON ROAD</li> <li>58, RUSSELL</li> <li>59, MERRIWETHER</li> <li>60, SAINT JOSEPH</li> <li>61, SCHNITZELBURG</li> <li>62, SHAWNEE</li> <li>63, SHELBY PARK</li> <li>64, SMOKETOWN JACKSON</li> <li>65, SOUTH LOUISVILLE</li> <li>66, SOUTHLAND PARK</li> <li>67, SOUTHSIDE</li> <li>68, STANDFORD</li> <li>69, TAYLOR BERRY</li> <li>70, TYLER PARK</li> <li>71, UNIVERSITY</li> <li>72, WILDER PARK</li> <li>73, WYANDOTTE/OAKDALE</li> <li>74, PARISTOWN POINT</li> </ol> | <p><b>Municipality Codes</b></p> <ol style="list-style-type: none"> <li>1, ANCHORAGE</li> <li>2, AUDUBON PARK</li> <li>3, BANCROFT</li> <li>4, BARBOURMEADE</li> <li>5, BEECHWOOD VILLAGE</li> <li>6, BELLEMEADE</li> <li>7, BELLEWOOD</li> <li>8, BLUE RIDGE MANOR</li> <li>9, BRIARWOOD</li> <li>11, BROECK POINTE</li> <li>12, BROWNSBORO FARM</li> <li>13, BROWNSBORO VILLAGE</li> <li>14, CAMBRIDGE</li> <li>16, CREEKSIDE</li> <li>17, CROSSGATE</li> <li>19, DOUGLASS HILLS</li> <li>20, DRUID HILLS</li> <li>22, FINCASTLE</li> <li>23, FOREST HILLS</li> <li>24, GLENVIEW HILLS</li> <li>25, GLENVIEW MANOR</li> <li>26, GOOSE CREEK</li> <li>27, GRAYMOOR/DEVONDALE</li> <li>28, GREEN SPRING</li> <li>29, HICKORY HILL</li> <li>30, HILLS AND DALES</li> <li>31, HOLLOW CREEK</li> <li>32, HOLLYHILLA</li> <li>33, HOUSTON ACRES</li> <li>34, HURSTBOURNE ACRES</li> <li>35, INDIAN HILLS</li> <li>37, JEFFERSONTOWN</li> <li>39, KINGSLEY</li> <li>40, LANGOON PLACE</li> <li>41, LINCOLNSHIRE</li> <li>43, LYNDON</li> <li>44, LYNNVIEW</li> <li>45, MANOR CREEK</li> <li>46, MARYHILL ESTATES</li> <li>47, MEADOWBROOK FARM</li> <li>48, MEADOW VALE</li> <li>49, MEADOWVIEW ESTATES</li> <li>50, MIDDLETOWN</li> <li>51, HERITAGE CREEK</li> <li>52, MOCKINGBIRD VALLEY</li> <li>53, MOORLAND</li> <li>54, NORBOURNE ESTATES</li> <li>55, NORTHFIELD</li> <li>56, NORWOOD</li> <li>57, OLD BROWNSBORO PLACE</li> <li>58, PARKWAY VILLAGE</li> <li>59, PLANTATION</li> <li>61, PROSPECT</li> <li>62, RICHLAWN</li> <li>63, RIVERWOOD</li> <li>65, ROLLING FIELDS</li> <li>66, ROLLING HILLS</li> <li>67, ST MATTHEWS</li> <li>68, ST REGIS PARK</li> <li>69, SENECA GARDENS</li> <li>70, SHIVELY</li> <li>71, SOUTH PARK VIEW</li> <li>74, STRATHMOOR MANOR</li> <li>75, STRATHMOOR VILLAGE</li> <li>76, SYCAMORE</li> <li>77, TEN BROECK</li> <li>78, THORNHILL</li> <li>79, WATTERSON PARK</li> <li>80, WESTWOOD</li> <li>82, WELLINGTON</li> <li>83, WEST BUECHEL</li> <li>85, WILDWOOD</li> <li>86, WINDY HILLS</li> <li>87, WOODLAND HILLS</li> <li>88, WOODLAWN PARK</li> <li>89, WORTHINGTON HILLS</li> <li>91, HURSTBOURNE</li> <li>92, MURRAY HILL</li> <li>93, POPLAR HILLS</li> <li>95, COLDSTREAM</li> <li>96, SPRING VALLEY</li> <li>98, GLENVIEW</li> <li>99, SPRING MILL</li> </ol> |
|---|--|

- Louisville Metro
- Jeffersontown
- 3rd Class Cities
- 4th Class Cities
- 5th Class Cities
- 6th Class Cities
- Metro Council Districts
- Census Designated Places (2000)



Urban Neighborhoods are based on a federal urban neighborhood mapping grant from the late 1970s. Many of these boundaries are still used for grants.

The Municipalities represent smaller cities within Louisville. Before the city-county merger, these municipalities were independent governmental entities. Today, they share governmental authority with Louisville Metro through defined interlocal agreements.

The Census Designated Places lie outside of the former Louisville city boundary. Historically, before the city-county merger, these were densely settled concentrations of population that were not within an incorporated boundary but were identified locally by a name. Today, they are part of Louisville Metro.



Copyright (c) 2025, LOUISVILLE AND JEFFERSON COUNTY METROPOLITAN SEWER DISTRICT (MSD), LOUISVILLE WATER COMPANY (LWC), LOUISVILLE METRO GOVERNMENT, and JEFFERSON COUNTY PROPERTY VALUATION ADMINISTRATOR (PVA).

All Rights Reserved. Louisville/Jefferson County Information Consortium (LOJIC), a Jefferson County, Kentucky, based cooperative project of: Louisville Metro Government, Louisville Water Company, Metropolitan Sewer District, Property Valuation Administrator

Date: 5/17/2025