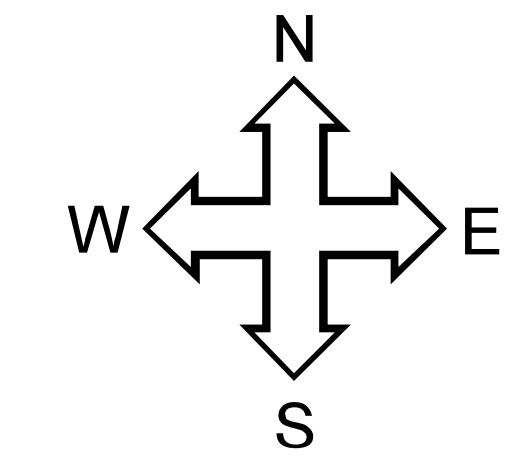


Urban Neighborhoods, Municipalities, and Census Designated Places (2000) Jefferson County, Kentucky



Urban Neighborhood Codes

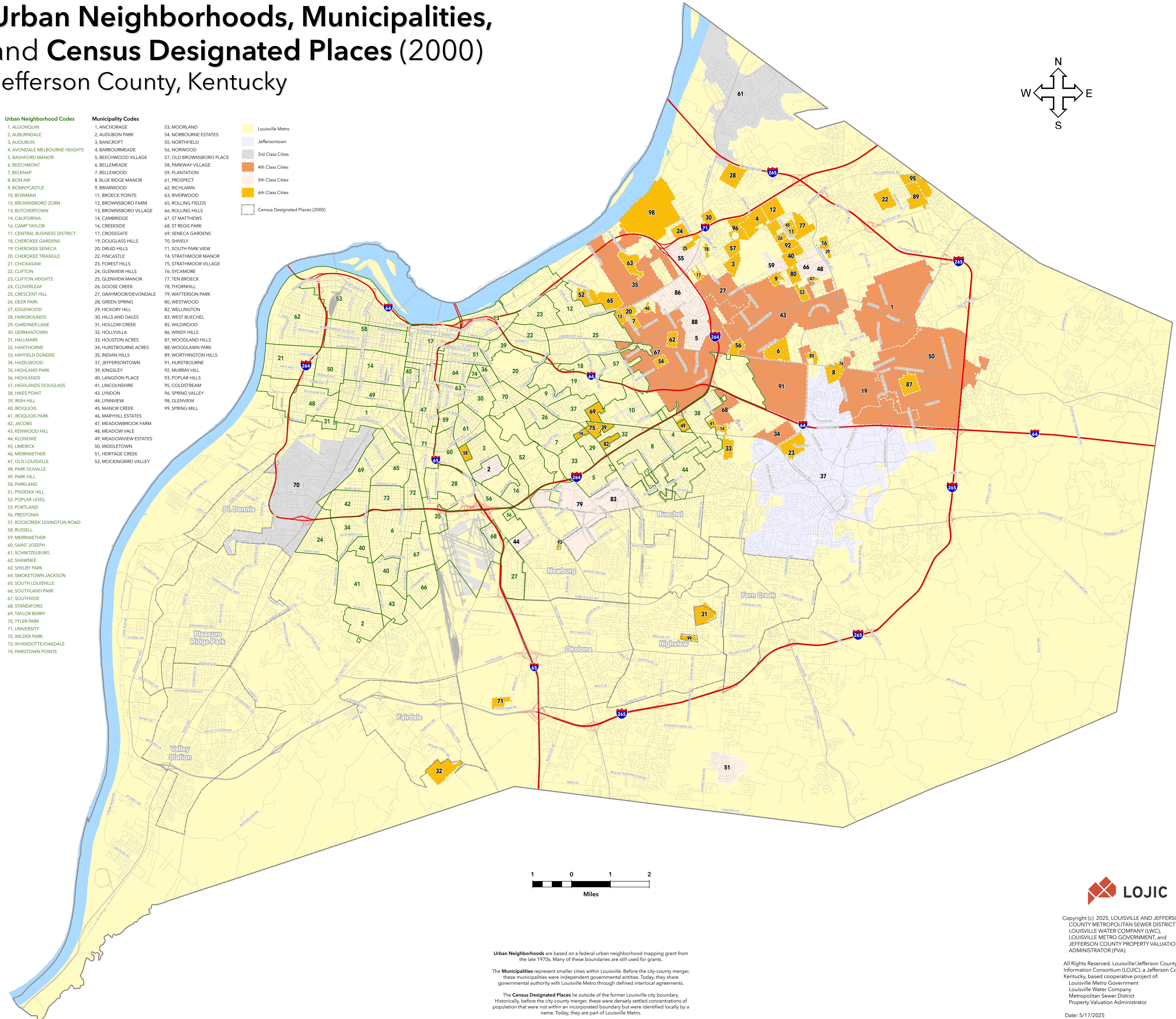
1. ALGONQUIN
2. AUBURNDALE
3. AUDUBON
4. AVONDALE MELBOURNE HEIGHTS
5. BASHFORD MANOR
6. BEECHMONT
7. BELKNAP
8. BON AIR
9. BONNYCASTLE
10. BONMAN
12. BROWNSBORO ZORN
13. BUTCHERTOWN
14. CALIFORNIA
16. CAMP TAYLOR
17. CENTRAL BUSINESS DISTRICT
18. CHEROKEE GARDENS
19. CHEROKEE SENECA
20. CHEROKEE TRIANGLE
21. CHICKASAW
22. CLIFTON
23. CLIFTON HEIGHTS
24. CLOVERLEAF
25. CRESCENT HILL
26. DEER PARK
27. EDGEWOOD
28. FAIRGROUNDS
29. GARDNER LANE
30. GERMAINTOWN
31. HALLMARK
32. HAWTHORNE
33. HAYFIELD DUNDEE
34. HAZELWOOD
35. HIGHLAND PARK
36. HIGHLANDS
37. HIGHLANDS DOUGLASS
38. HIKES POINT
39. IRISH HILL
40. IROQUOIS
41. IROQUOIS PARK
42. JACOBS
43. KENWOOD HILL
44. KLONDIKE
45. LIMERICK
46. MERRIWETHER
47. OLD LOUISVILLE
48. PARK DUVALLE
49. PARK HILL
50. PARKLAND
51. PHOENIX HILL
52. POPLAR LEVEL
53. PORTLAND
56. PRESTONIA
57. ROCKCREEK LEXINGTON ROAD
58. RUSSELL
59. MERRIWETHER
60. SAINT JOSEPH
61. SCHNITZELBURG
62. SHAWNEE
63. SHELBY PARK
64. SMOKETOWN JACKSON
65. SOUTH LOUISVILLE
66. SOUTHLAND PARK
67. SOUTHSIDE
68. STANDFORD
69. TAYLOR BERRY
70. TYLER PARK
71. UNIVERSITY
72. WILDER PARK
73. WYANDOTTE/OAKDALE
74. PARISTOWN POINT

Municipality Codes

1. ANCHORAGE
2. AUDUBON PARK
3. BANCROFT
4. BARBOURMEADE
5. BEECHWOOD VILLAGE
6. BELLEMEADE
8. BLUE RIDGE MANOR
9. BRIARWOOD
11. BROECK POINTE
12. BROWNSBORO FARM
13. BROWNSBORO VILLAGE
14. CAMBRIDGE
16. CREEKSIDE
17. CROSSGATE
19. DOUGLASS HILLS
20. DRUID HILLS
22. FINCASTLE
23. FOREST HILLS
24. GLENVIEW HILLS
25. GLENVIEW MANOR
26. GOOSE CREEK
27. GRAYMOOR/DEVONDALE
28. GREEN SPRING
29. HICKORY HILL
30. HILLS AND DALES
31. HOLLOW CREEK
32. HOLLYHILLS
33. HOUSTON ACRES
34. HURSTBOURNE ACRES
35. INDIAN HILLS
37. JEFFERSONTOWN
39. KINGSLEY
40. LANGOON PLACE
41. LINCOLNSHIRE
43. LYNDON
44. LYNNVIEW
45. MANOR CREEK
46. MARYHILL ESTATES
47. MEADOWBROOK FARM
48. MEADOW VALE
49. MEADOWVIEW ESTATES
50. MIDDLETOWN
51. HERITAGE CREEK
52. MOCKINGBIRD VALLEY
53. MOORLAND
54. NORBOURNE ESTATES
55. NORTHFIELD
56. NORWOOD
57. OLD BROWNSBORO PLACE
58. PARKWAY VILLAGE
59. PLANTATION
61. PROSPECT
62. RICHLAWN
63. RIVERWOOD
65. ROLLING FIELDS
66. ROLLING HILLS
67. ST MATTHEWS
68. ST REGIS PARK
69. SENECA GARDENS
70. SHIVELY
71. SOUTH PARK VIEW
74. STRATHMOOR MANOR
75. STRATHMOOR VILLAGE
76. SYCAMORE
77. TEN BROECK
78. THORNHILL
79. WATTERSON PARK
80. WESTWOOD
82. WELLINGTON
83. WEST BUECHEL
85. WILDWOOD
86. WINDY HILLS
87. WOODLAND HILLS
88. WOODLAWN PARK
89. WORTHINGTON HILLS
91. HURSTBOURNE
92. MURRAY HILL
93. POPLAR HILLS
95. COLDSTREAM
96. SPRING VALLEY
98. GLENVIEW
99. SPRING MILL

- Louisville Metro
- Jeffersontown
- 3rd Class Cities
- 4th Class Cities
- 5th Class Cities
- 6th Class Cities

Census Designated Places (2000)



Urban Neighborhoods are based on a federal urban neighborhood mapping grant from the late 1970s. Many of these boundaries are still used for grants.

The Municipalities represent smaller cities within Louisville. Before the city-county merger, these municipalities were independent governmental entities. Today, they share governmental authority with Louisville Metro through defined interlocal agreements.

The Census Designated Places lie outside of the former Louisville city boundary. Historically, before the city-county merger, these were densely settled concentrations of population that were not within an incorporated boundary but were identified locally by a name. Today, they are part of Louisville Metro.



Copyright (c) 2025, LOUISVILLE AND JEFFERSON COUNTY METROPOLITAN SEWER DISTRICT (MSD), LOUISVILLE WATER COMPANY (LWC), LOUISVILLE METRO GOVERNMENT, and JEFFERSON COUNTY PROPERTY VALUATION ADMINISTRATOR (PVA).

All Rights Reserved. Louisville/Jefferson County Information Consortium (LOJIC), a Jefferson County, Kentucky, based cooperative project of: Louisville Metro Government, Louisville Water Company, Metropolitan Sewer District, Property Valuation Administrator

Date: 5/17/2025