

Accessing LOJIC Data

Accessing LOJIC Layer files and Group Layer files:

The recommended way to add data to an ArcGIS 10.X map document is by using layer files. Layer files are added to a map document just like adding data but the layer properties are set up including symbology, labeling, and scale thresholds. Layer files and Group Layer files are located in the **M:\Production\lojic\layerfile** directory. The layerfile directory structure reflects the current data directory structure. (Figure 1)

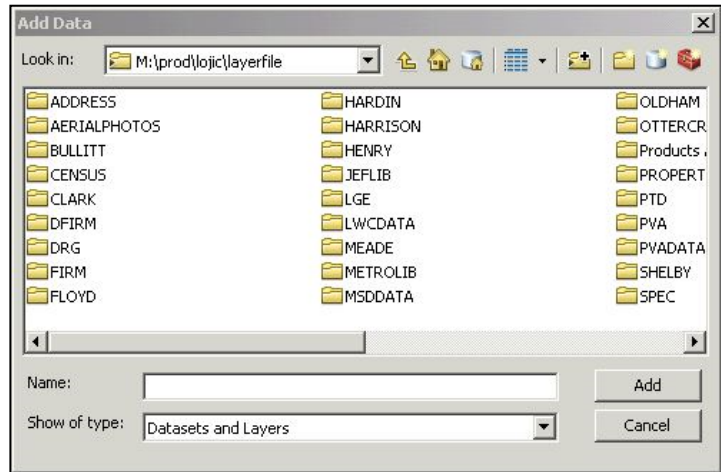


Figure 1 – Layerfile Directory Structure.

Once layer files are added to a map document, they are not linked to the original layer file. That means that you can edit the layer in your map document to meet your needs without affecting the original layer file. Conversely, changes to the original layer files will not be reflected in map documents that used the layer files to create layers.

Accessing LOJIC Layer Files: Example - Adding Street Centerlines

Open **ArcMap** in a Citrix connection. **Open a Blank Map document from My Templates. Open ArcCatalog** and make a **Connection to Folder M:\Production\lojic\layerfile** from **My Computer. Click OK. Close the ArcCatalog** window.

In **ArcMap**, **Click the ADD DATA** button and navigate to **M:\Production\lojic\layerfile\JEFLIB**. **Scroll over and select the Major Roads.lyr. Click ADD.** A Spatial Database Connection login window will appear (Figure 2). Enter your SDE Oracle username and SDE Oracle password and click **OK**.

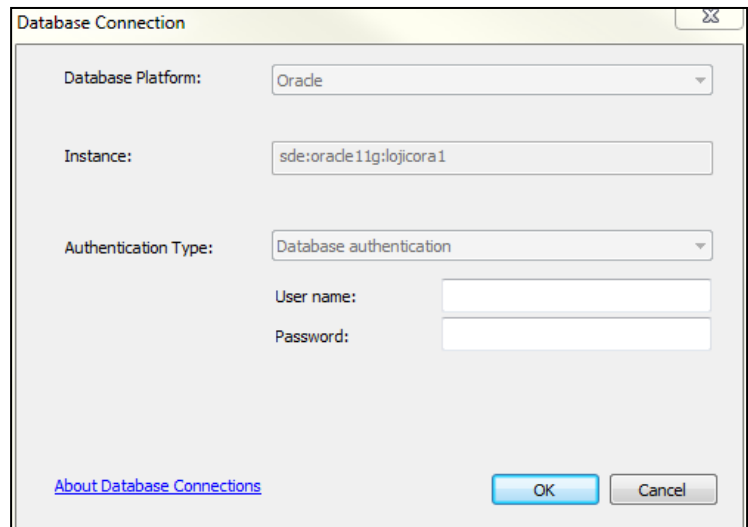


Figure 2 – Spatial Database Connection window.

Click the **Add Data** Button and navigate to **M:\Production\lojic\layerfile\ADDRESS** and add the **Streets.lyr**

When the layers are added, check both the layers on. It should look like Figure 3 in the Data View.

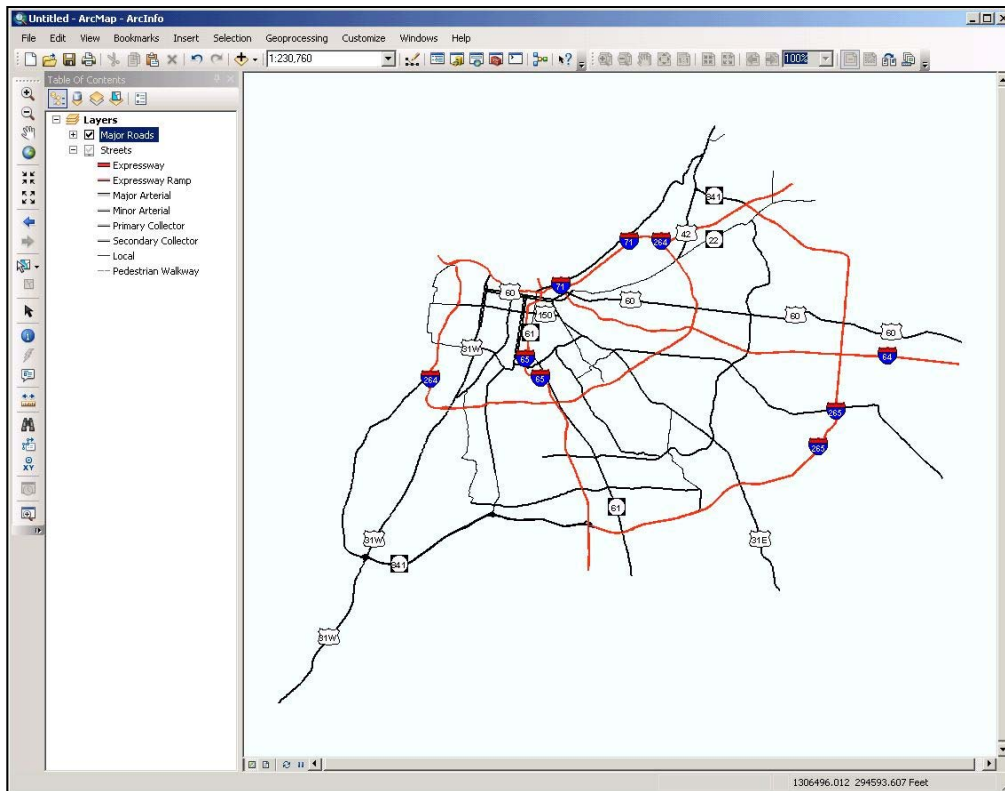


Figure 3 – Opening View

You should see labels on Interstates. **Zoom In** to an area. You will see more street and names appear. If you hover the cursor over a road, the name should appear in a box near the cursor. All of these properties (symbology, map tips display, labeling thresholds) are contained in the layer file.

Accessing LOJIC Oracle Layers:

If you cannot find a layer file in the layerfile directory, you can add the data directly without any layer properties predefined. Please contact Jane Poole (poole@lojic.org or 540-6435) to have layer files made. **Click the ADD DATA** button in ArcMap. From the Add Data window, (Figure 4) navigate to **Database Connections**, then double-click **Add Database Connection**.

A Database Connection login window will appear. Make sure the Instance is

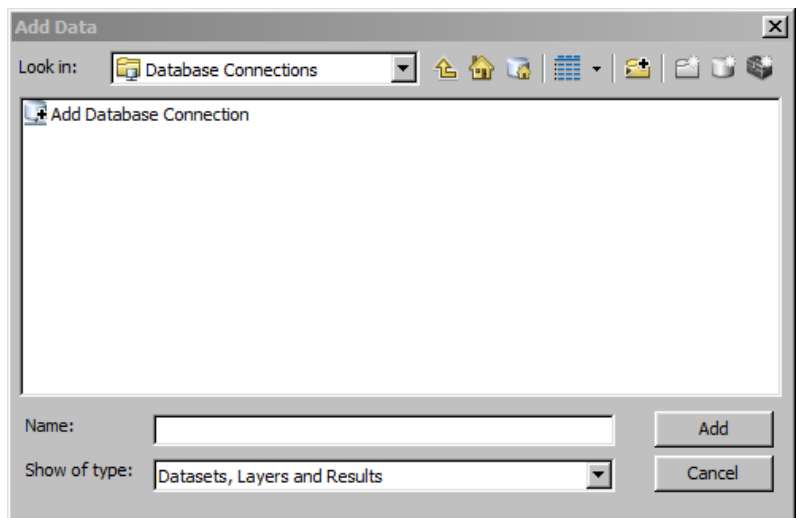


Figure 4 – Add Database Connection.

lojicora1/sde:oracle11g. Enter your Oracle user name and password

IMPORTANT: UNCHECK THE SAVE NAME/PASSWORD OPTION . Failure to uncheck that option will cause major problems in the future.

Click **OK**. A connection called **Connection to lojicora1.sde** will now be available for selection in the **Add Data** window. (Figure 4) This connection will remain for future use. Select **Connection to lojicora1.sde** and Click **ADD**.

Once connected to the LOJIC Oracle database, you will see a list of all the point,

line and polygon layers. (Figure 6) You can then double-click on any layer to add it to your ArcMap view. In this exercise, **scroll** over and **select JEFLIB.COUNCIL** to add the Metro Council District layer. Click **ADD**.

NOTE ON ORACLE NAMING CONVENTION: The naming convention for Oracle Layers is: <DIRECTORY NAME>.<LAYER NAME>{FEATURE CLASS}

Example: JEFLIB.COUNCIL or JEFLIB.MUNICBND_LINE

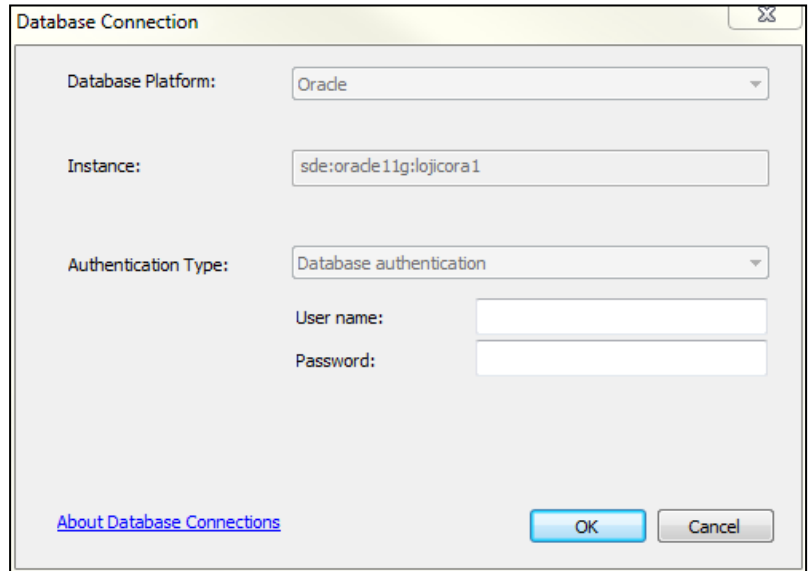


Figure 5 – Database Connection Login.

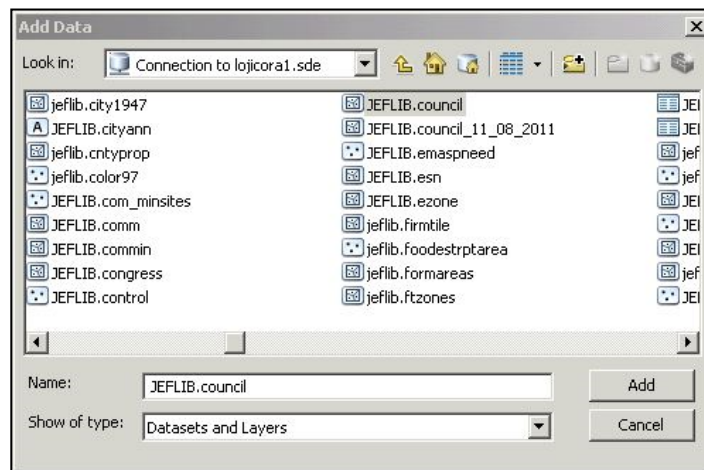


Figure 6 – LOJIC Oracle Layers.

The layer will come into your view looking similar to Figure 7. **Right click** on the layer name and select **Properties** to edit symbology, add labeling, change the layer name or do whatever your needs require.

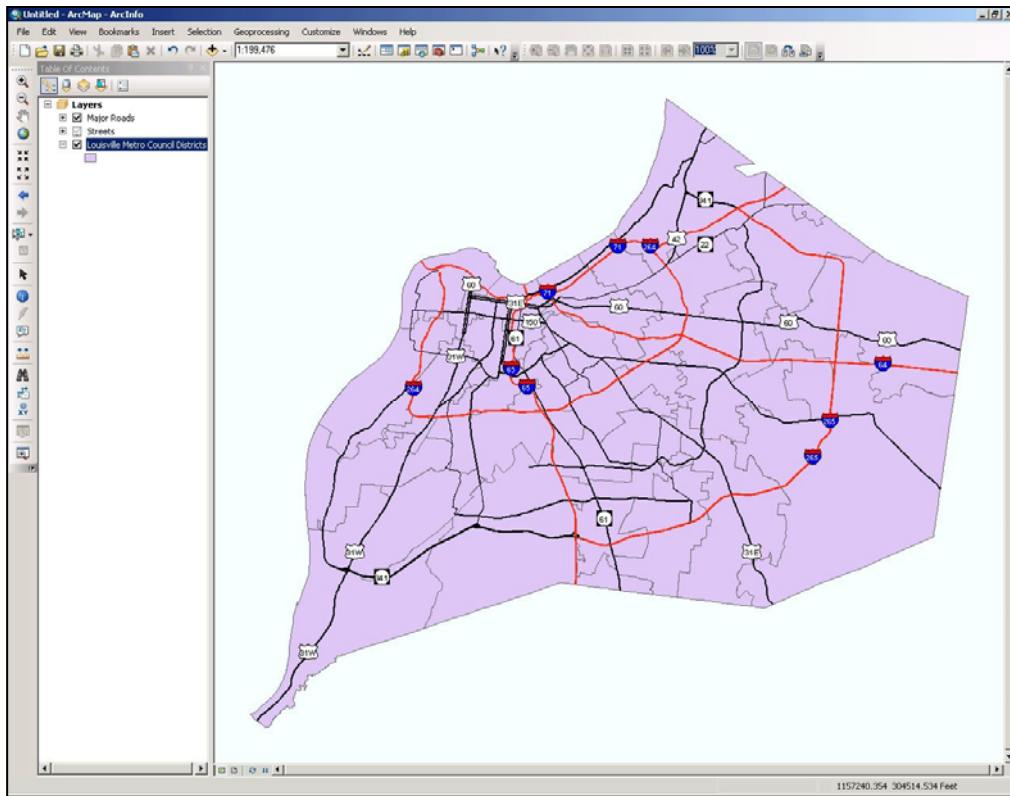


Figure 7 – Council Districts with no predefined layer properties.

Exit the ArcMap.